

# Asure™

SEE MORE. GET MORE.™



Introducing **Asure** way to transform your home.



# Asure way to bring beauty, comfort and value to your home.

Just imagine. A window and door design that has the power to transform your home. Windows with such a large viewing area, you'll see more of your world. Windows that you can combine to enjoy a wall of windows, instead of just a wall. Windows so beautiful that, sometimes, the window is the treatment. Welcome to **Asure™** way to transform your home.



**Asure™**  
your satisfaction.



Simonton ranks "Highest in Customer Satisfaction with Windows and Doors, Three Years in a Row."

## Wider frames aren't always better.

While it's true that beauty is in the eye of the beholder, we think you'll agree that the narrow frame of *Asure*<sup>™</sup> windows is a work of art. You'll appreciate the streamlined, yet sophisticated design. You'll see clean, crisp lines that manage to be both classic and contemporary. And most importantly, you'll see legendary Simonton quality in every last detail.



**Asure**<sup>™</sup>  
you'll love what you see.



You'll love the thoughtful design of *Asure* windows and doors.

Just because the glass surface of your windows is cold on the outside doesn't mean you have to be cold on the *inside*. An advanced spacer system and optional



ProSolar® Low E glass with an Argon gas fill help **Asure** that, no matter what happens outside, you'll be warm and toasty inside.

No matter where you go, there you are. And selecting a glass package guaranteed to meet ENERGY STAR® guidelines is simple. Just select your region and you're there.



*A Picture window flanked by Double Hung windows on each side is the perfect way to open up a room.*

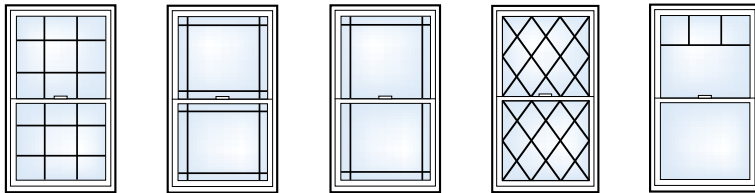


## STEP 3 Choose your glass and grid options.

**Let your home express itself.** Looking for *Asure* way to enhance curb appeal? You just found it. Unique glass and grid options make it easy to add a stylish touch. After all, we make the windows. But you make them yours.

### Grid Patterns

Colonial, Prairie and Perimeter grids are available in flat white or tan and sculptured white, tan or brass. Victorian and Diamond grids are only available in flat white and tan.



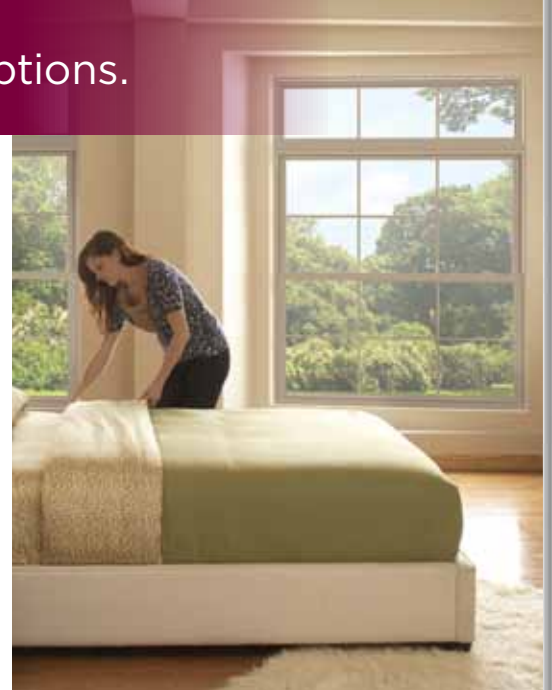
Colonial

Prairie

Perimeter

Diamond

Victorian



*A Double Hung window mulled with a Picture window above makes the perfect showcase for Colonial grids.*

### Grids

Available in flat or sculptured styles, grids are placed between the glass panes, so you'll never have to clean them. That makes the smooth glass surface easier to clean, too.



Flat White



Sculptured White



Flat Tan



Sculptured Tan



Sculptured Brass

### Colors



White

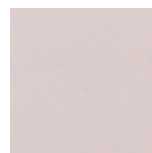


Tan

### Glass Options



Tempered



Bronze Tint



Grey Tint



Obscure

# The door for people who love windows.

Now that you've chosen the perfect windows, why not consider the perfect door? Just like **Asure™** windows, the **Asure** Patio Door features a narrow frame and large sightline for an expansive, all-inclusive viewing area. And it's the perfect way to fill a room with plentiful sunlight and fresh air.

## Hardware Finishes



White



Tan



Antique  
Brass



Polished  
Brass



Brushed  
Chrome



Mineral  
Bronze

## Colors



White



Tan



**Asure™**  
way to open up a room.



No green thumb? Maybe your thumb isn't the problem. Your plants will love all the sunlight that comes with an *Asure* Patio Door.

# Take a very close look at the things you don't see.

You'll realize right away how beautiful and functional **Asure™** windows and doors are.

But the thoughtful details you can't see are every bit as impressive.



**Rain, rain, go away (quickly).** Unlike windows with flat sills, **Asure** windows have a stepped sill (A) to quickly direct water away from the window. And only Simonton has the Lap-Lok® meeting rail (B), one of the reasons **Asure** windows do such a great job of keeping wind and rain outside. The sash overlap *and* interlock to form a formidable seal.

**Strength in numbers.** **Asure** windows feature profiles with several sealed air chambers (C) for increased rigidity. The frame and sash profiles are fusion-welded (D) for one-piece strength.

**An invisible blanket.** You can't actually see peace of mind, but it sure is a beautiful and comforting thing. That's why **Asure** windows are backed by a Double-Lifetime Limited Warranty. And why that warranty is backed by a company that has been around for over 65 years.



**Asure™**  
lower energy costs.